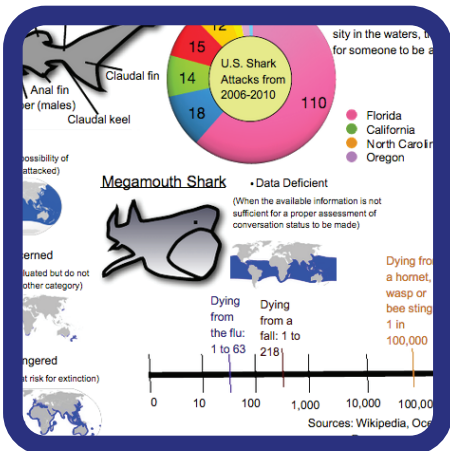


Show What You Mean

part 2



Includes geographical data and relative risk of shark attacks vs. other risks

Link Multiple Dimensions

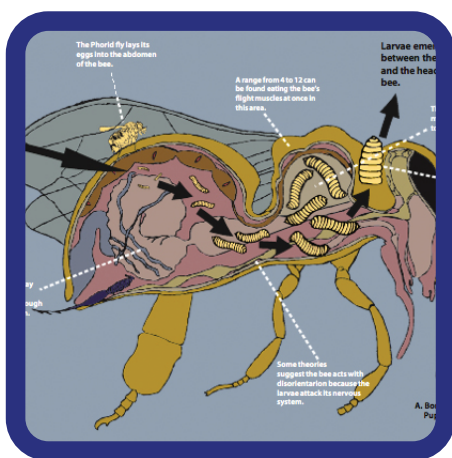
Are there any possible links between the data?

Did you consider how the different pieces of data might be related?

Can someone look at the infographic several times and discover something new each time?



Allows reader to explore possible relationships between tsunami height, cost, and death tolls



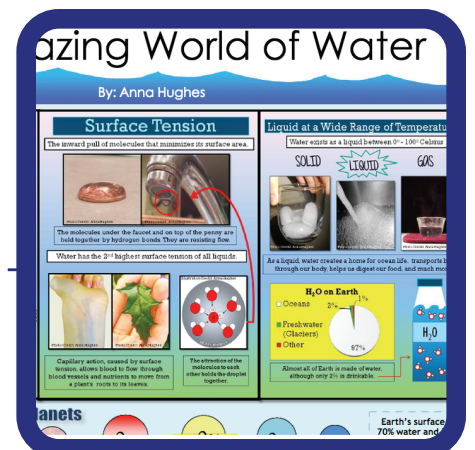
Interesting topic with anatomically accurate diagram of an infected "zombie" bee

Be Accurate and Unbiased

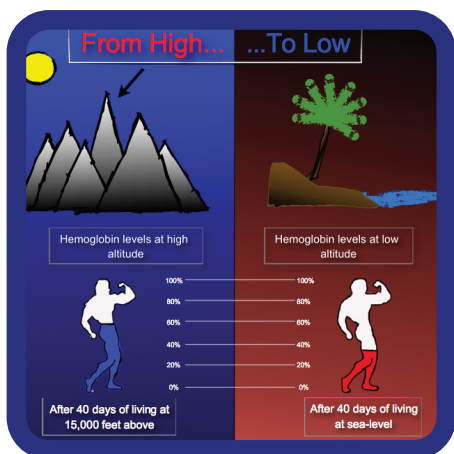
Is the infographic accurate and unbiased?

Is it a fair representation?

Did you avoid visual "tricks" to misrepresent data?



Detailed technical information on water qualities such as surface tension



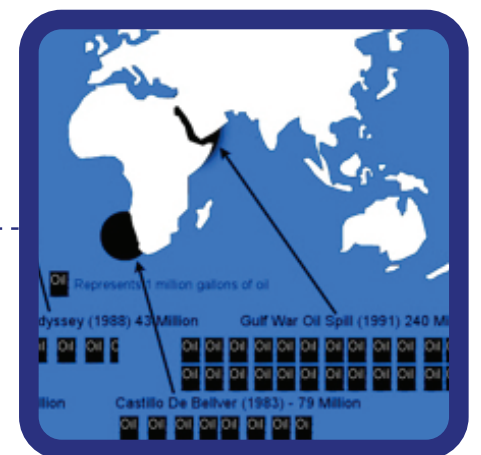
Uses simple visuals to convey hemoglobin levels at different altitudes

Make it Understandable

Did you leave out unnecessary words, images, and graphic clutter?

Is it easy for readers to understand the information?

Did you make a complicated issue or set of data easier to understand for your reader?



Map shows location of various oil spills which is linked to clear graphic showing amount of oil spilled